


**Jefferson-Chalmers WATER Project**  
 Water Access, Technology, Education and Recreation  
Keep Sewage out of Basements & Canals • Keep Stormwater out of the System • Keep Great Lakes out of the Neighborhood

**PROPOSED FREUD STREET PUMP STATION**  
 REVIEW + ANALYSIS



City of Detroit – City Planning Commission  
 January 16, 2025

PRESENTED BY: JAY C. JUERGENSEN  
 JUERGENSEN+ASSOCIATES, LLC  
 FOX CREEK PROPERTIES II, LLC

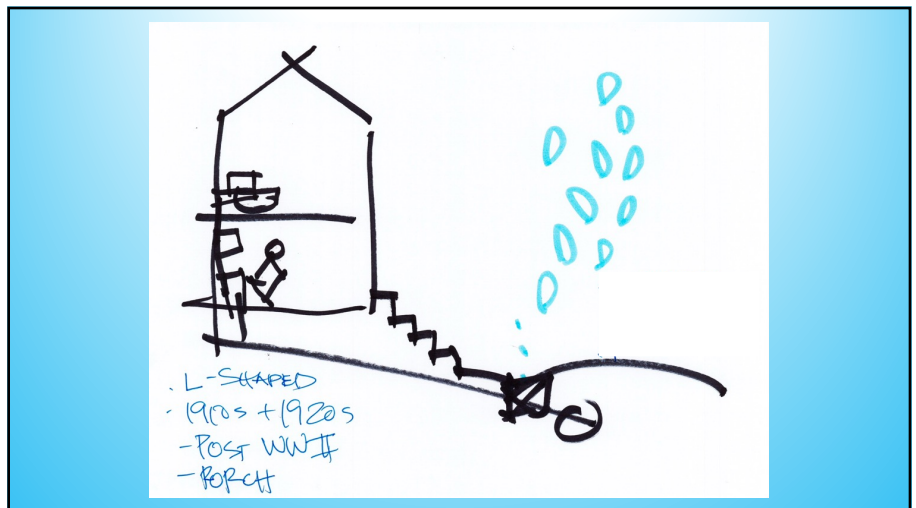
1



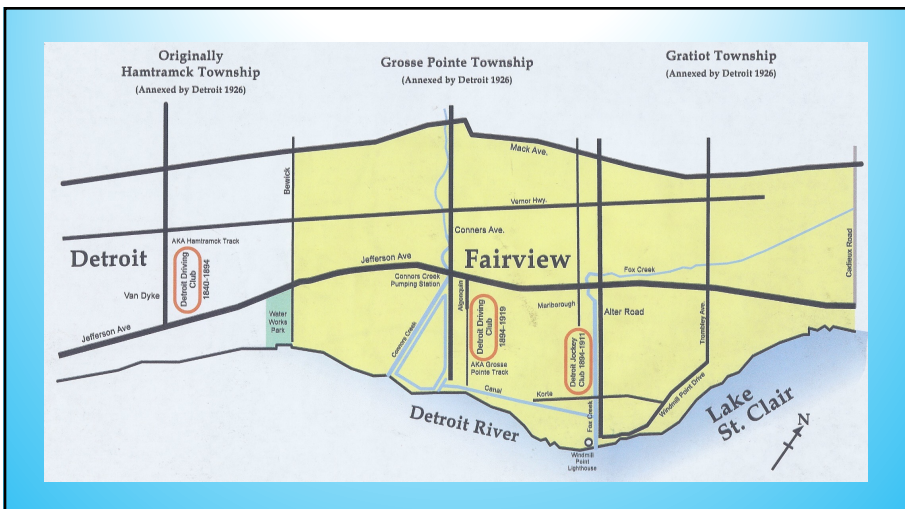
2

JEFFERSON-CHALMERS  
 WATER PROJECT  
 WATER  
 ACCESS  
 TECHNOLOGY  
 EDUCATION &  
 RECREATION.

3



4



5

CSO

6



7



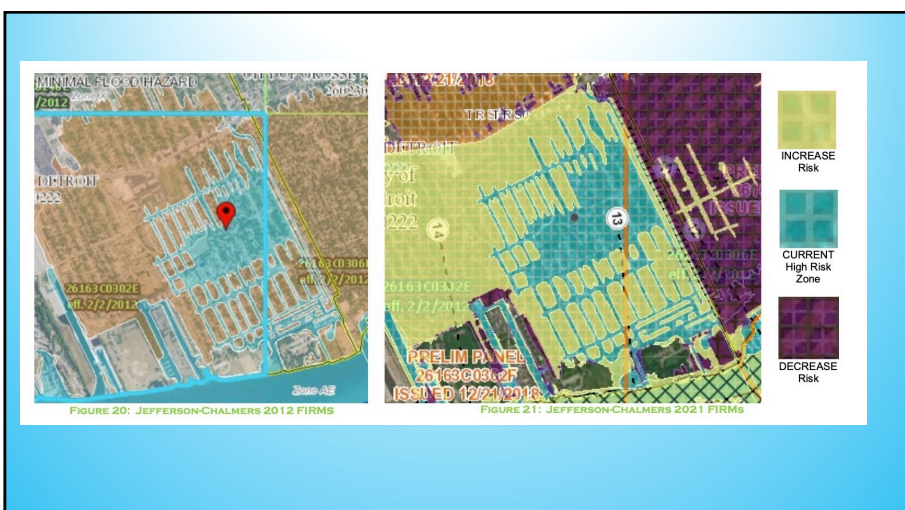
8



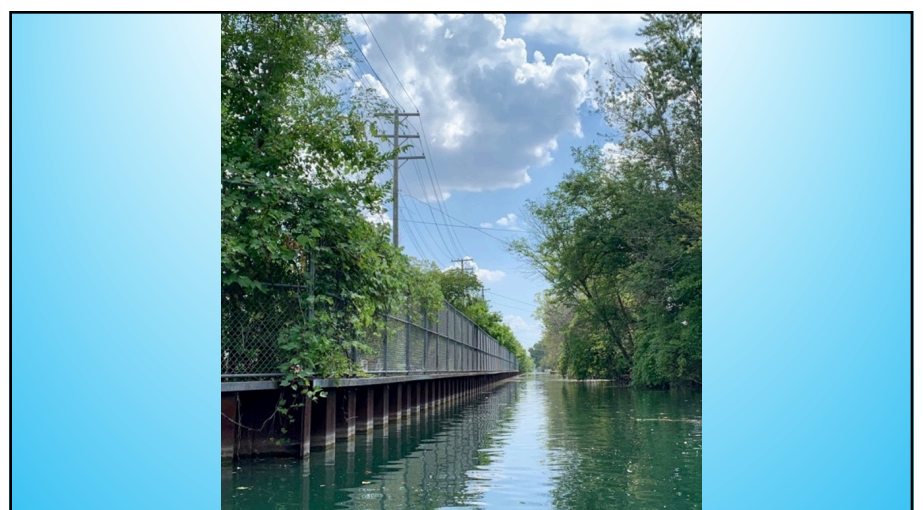
9



10



11



12



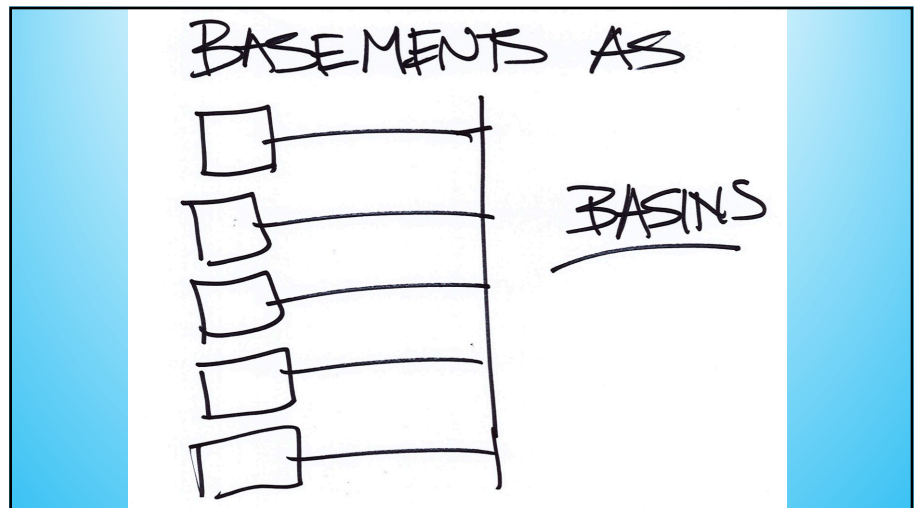
13



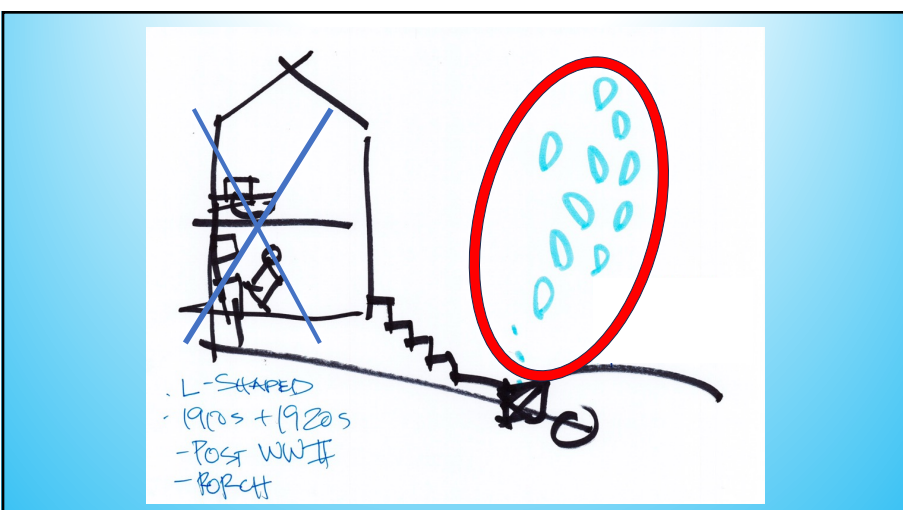
14



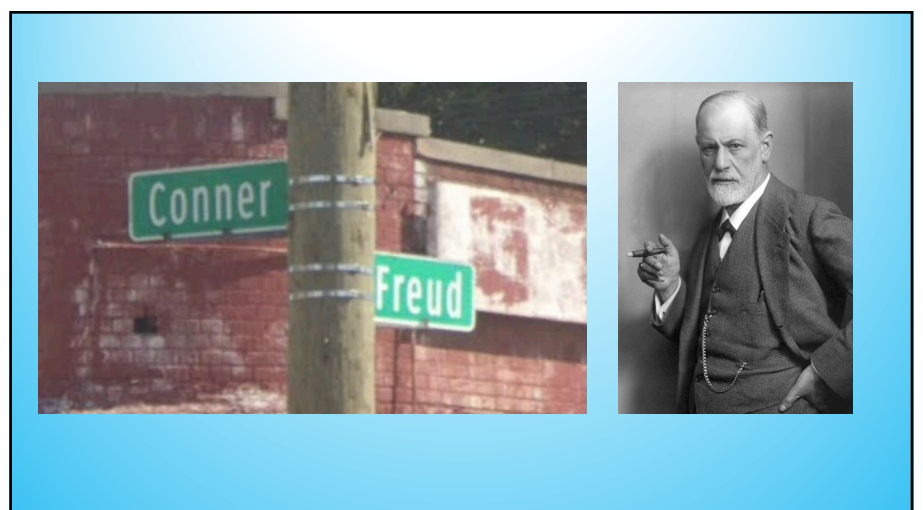
15



16



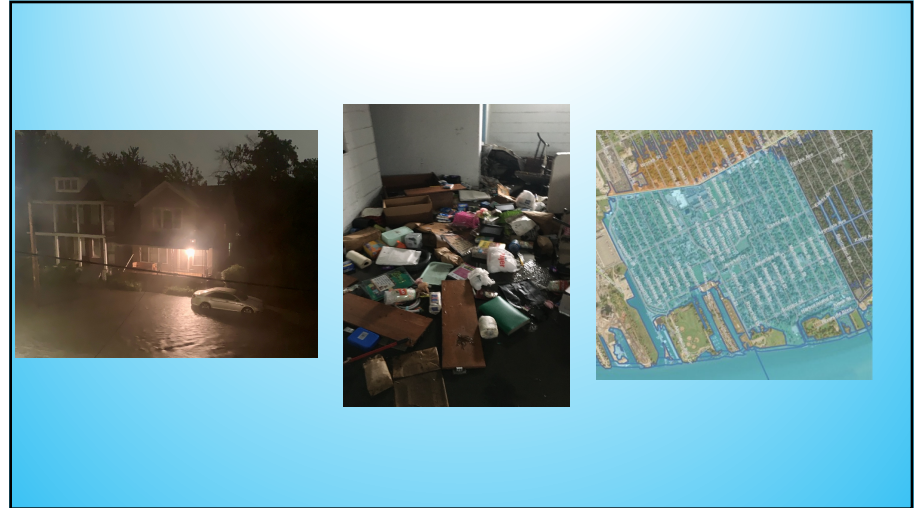
17



18



19



20



21



22



23



24



25



26



27



28



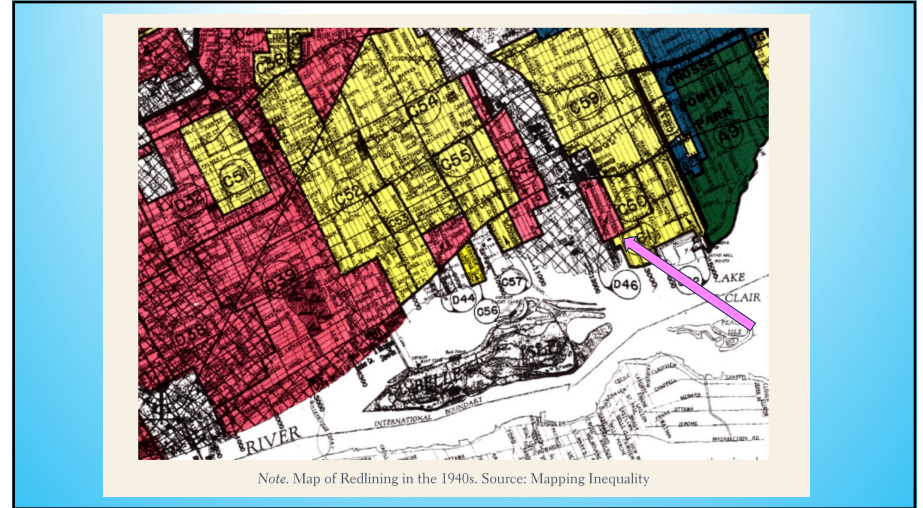
29



30



31



32



33



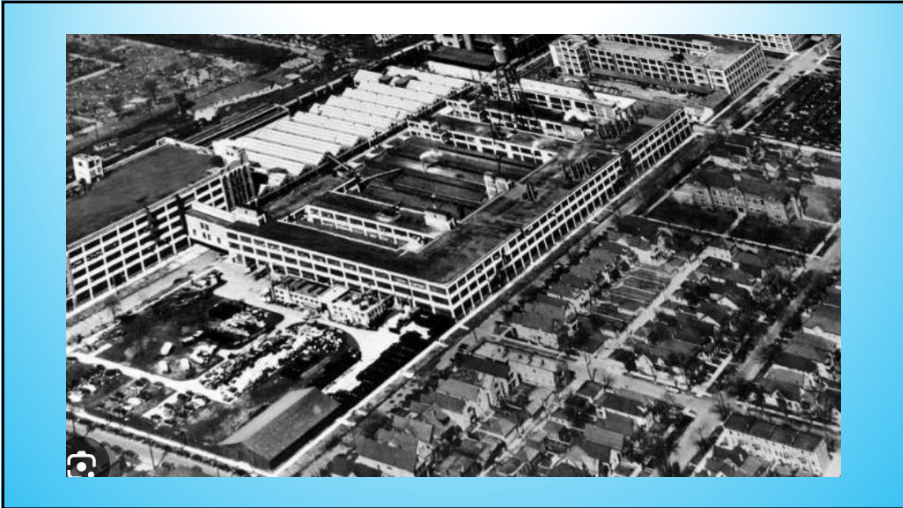
34



35



36



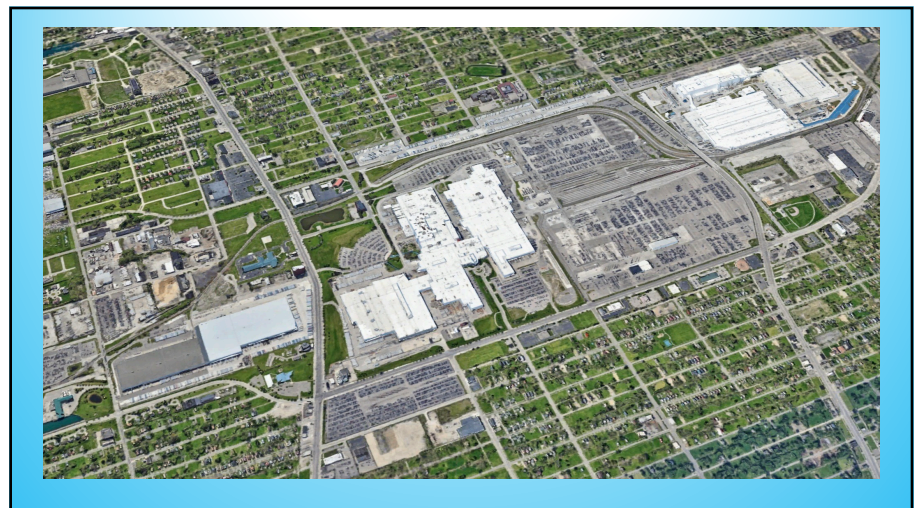
37



38



39



40



41



42





49



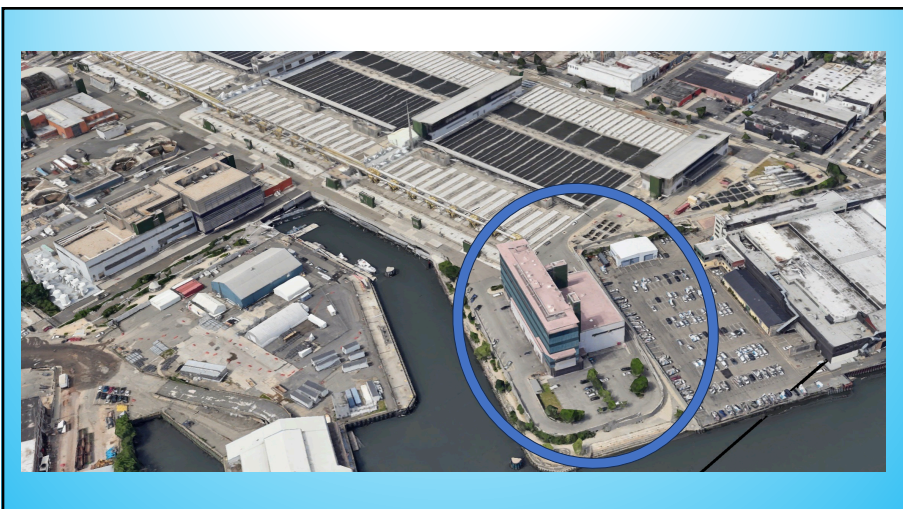
50



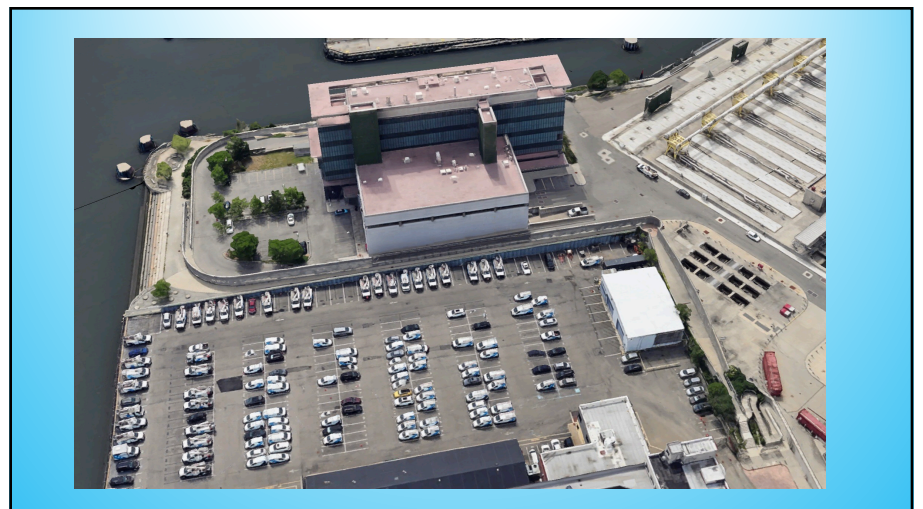
51



52



53



54



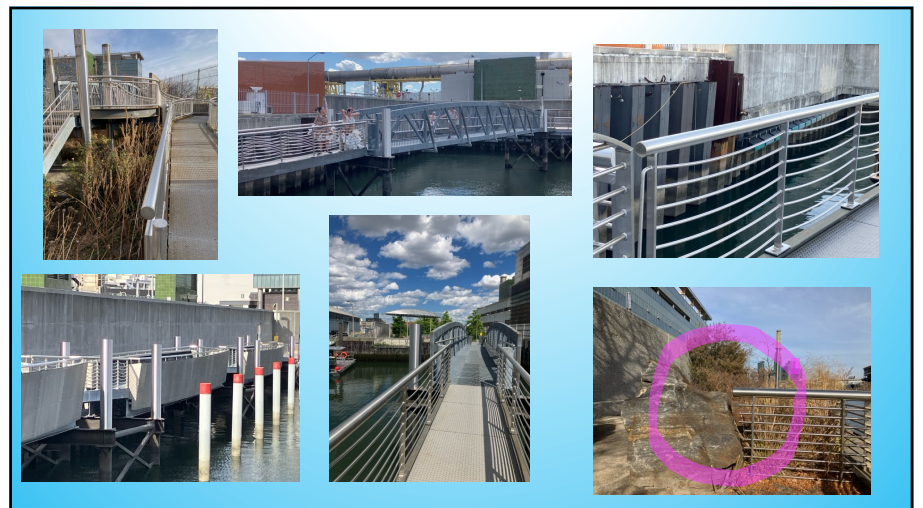
55



56



57



58



59



60



61



62



63



64



65



66





73



74



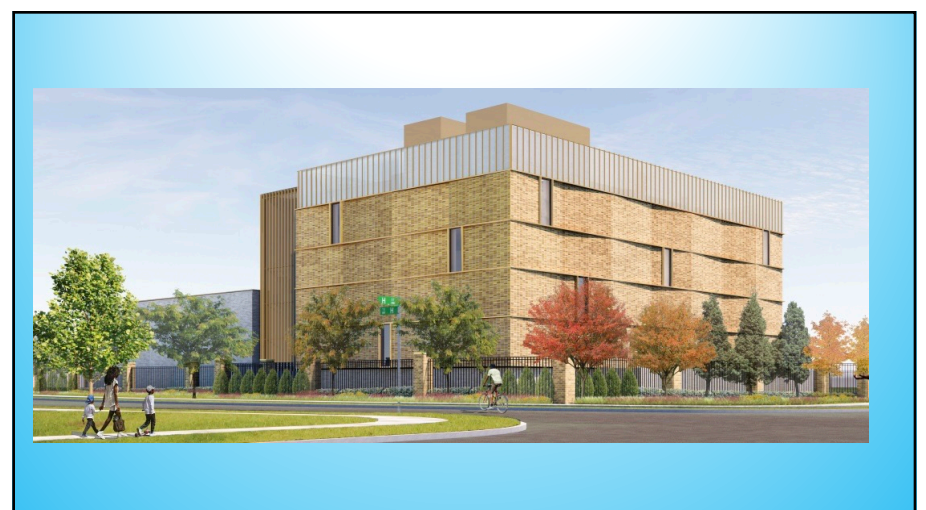
75



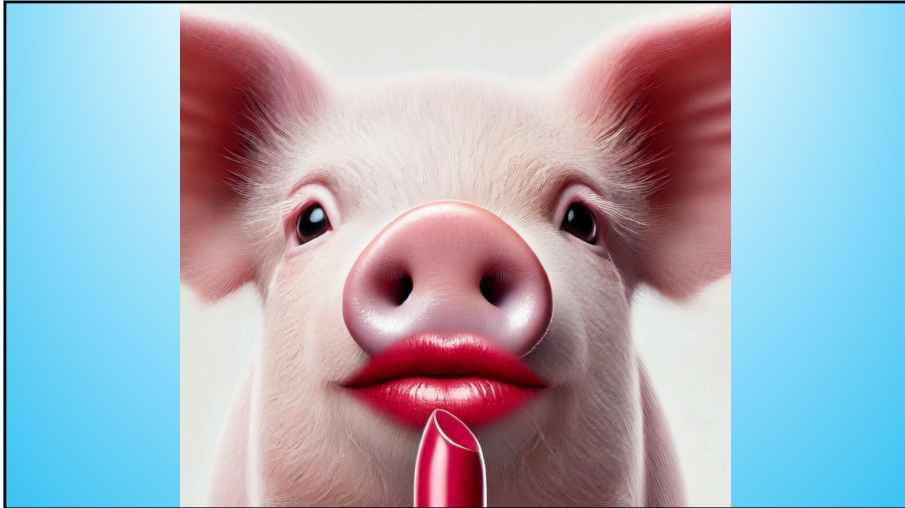
76



77



78



79

**ADVOCATING FOR REPARATIVE OUTCOMES ALONG I-375**  
A RESIDENT GUIDE  
December 2024

**LEVELS OF ENGAGEMENT**

<b>Power-sharing</b> (Collaboration & decision-making)	<b>Co-designing</b> (Involvement/consulting)	<b>Co-learning</b> (feedback/input)	<b>Informing</b> (one-way communication)	<b>Marginalization</b> (exclusion)
---	---	--	---	---------------------------------------

**LEVELS OF ENGAGEMENT**

**Power-sharing**  
This involves one-way communication and the community to provide input on plans, concepts, policies, or programs. It includes opportunities for input from decision-making and creates shared responsibility.

**Co-designing**  
This involves two-way communication and the community to provide input on plans, concepts, policies, or programs. It includes opportunities for input from decision-making and creates shared responsibility.

**Co-learning**  
This involves two-way communication and the community to provide input on plans, concepts, policies, or programs. It includes opportunities for input from decision-making and creates shared responsibility.

**Informing**  
This involves one-way communication and the community to provide input on plans, concepts, policies, or programs. It includes opportunities for input from decision-making and creates shared responsibility.

**Marginalization**  
This involves one-way communication and the community to provide input on plans, concepts, policies, or programs. It includes opportunities for input from decision-making and creates shared responsibility.

80



81



82



83

**CITY OF DETROIT**  
Department of Planning & Development

Coleman A. Young Municipal Center  
2 Woodward Avenue, Suite 808  
Detroit, Michigan 48226

Phone: 313.224.1399  
Fax: 313.224.1810  
www.detroitmi.gov/ddd

APPROVED  
 APPROVED WITH CHANGES NOTED  
 REVISE AND RESUBMIT  
 REJECTED

**STAFF BRIEF**

This document is the staff's comparison of the City of Detroit Design Review Guiding Principles, Design Guidelines for City of Detroit Zoning Ordinance and other applicable adopted area guidelines as applied to the proposed application. It is intended to provide guidance during the City Planning and Development Design Review of the proposed application.

**Date:** 07/29/2021  
**Project:** GLWA Freud Pump Station  
**Design Review Meeting:** PPR 07/13/2021  
**Address:** 1200 Freud Street  
**Staff:** Russell Baltimore (baltimore.r@detroitmi.gov), Julio Cedano (Cedano@detroitmi.gov)  
**Year structure built:** NA  
**Applicant:** Todd King, [todd.king@glwater.org](mailto:todd.king@glwater.org)  
**Project Scope Under Review:** New Construction

84



85



86



87



88

**THANK YOU!!!**

**Jefferson-Chalmers WATER Project**  
 Water Access, Technology, Education and Recreation  
Keep Sewage out of Basements & Crawl - Keep Stormwater out of the System - Keep Great Lakes out of the Neighborhood

[www.jeffersonchalmerswaterproject.org](http://www.jeffersonchalmerswaterproject.org)

89



90



91